



Introducing Icelantik

Solid Surface by Vendura



12 new beautiful colors give you the look of frosted glass with the properties of solid surface at an affordable price. When combined with backlight, they impart a dramatic, illuminated effect. Icelantik is ideal for any indoor and outdoor application.

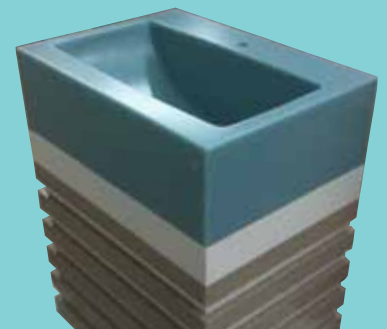
Icelantik Solid Surface offers great opportunities for illuminating bar tops, wall panels, partitions and much more. Available in multiple thicknesses: $\frac{1}{4}$ ", $\frac{3}{8}$ ", $\frac{1}{2}$ ", and $\frac{3}{4}$ ". Maximum sheet size 118" x 48".

Fabricating—Please be aware that, due to the translucent nature of Icelantik, supports, under-mounts, sink flanges, and dabs of silicone will show through your finished parts. When Icelantik is laminated together for a thicker appearance, such as drop-edge or seam block, the laminated areas will appear darker due to reduced light transmission. These natural shadow effects can be worked into your design schemes for a unique aesthetic appearance.

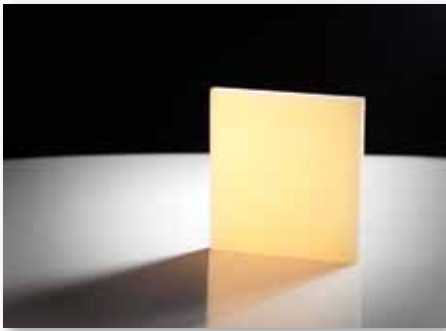
Illuminated



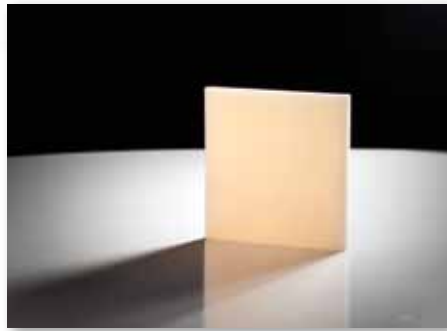
Not Illuminated



Icelantik Solid Surface by Vendura



Champagne



Cottage White



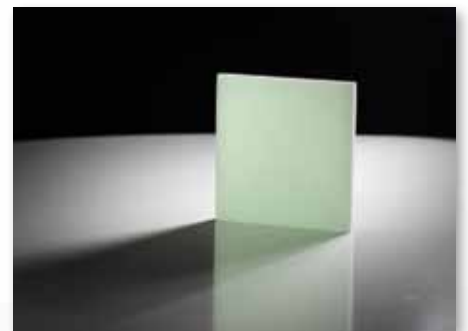
Eton Blue



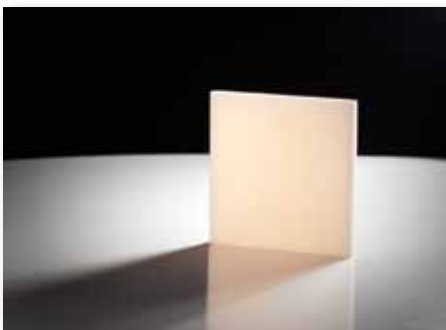
Glacier



Limone



Mint Mirage



Misty Meadow



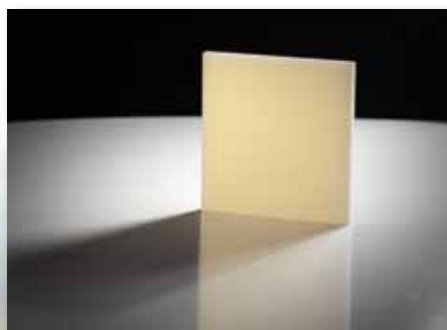
Moccasin



Rose Blush



Silk



Storm



Sunset Orange

Colors shown are illuminated.

1202 Femrite Drive • Madison, WI 53716
1-800-394-4524 • Local: 608-223-9555 • Fax: 608-223-9394

www.Vendura.com