

Submittal Drawings for

SB-3660RDTDLC-XXX-A

36"x60" Rear Dual Trench Drain Low Curb Shower Base

XXX = Color

A = Index Number

- Specific submittal drawings can be issued once
the part number has been finalized.

BILL OF MATERIALS:

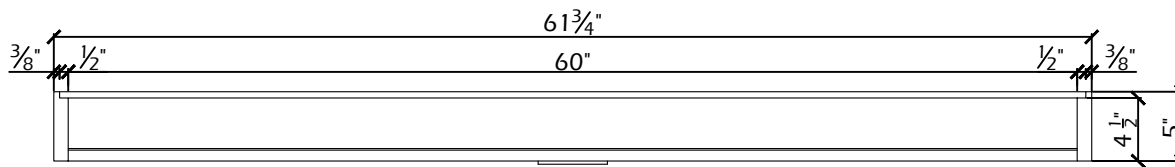
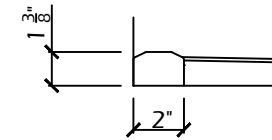
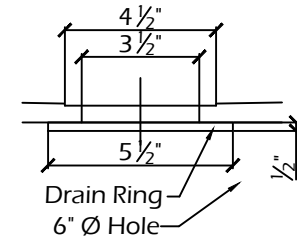
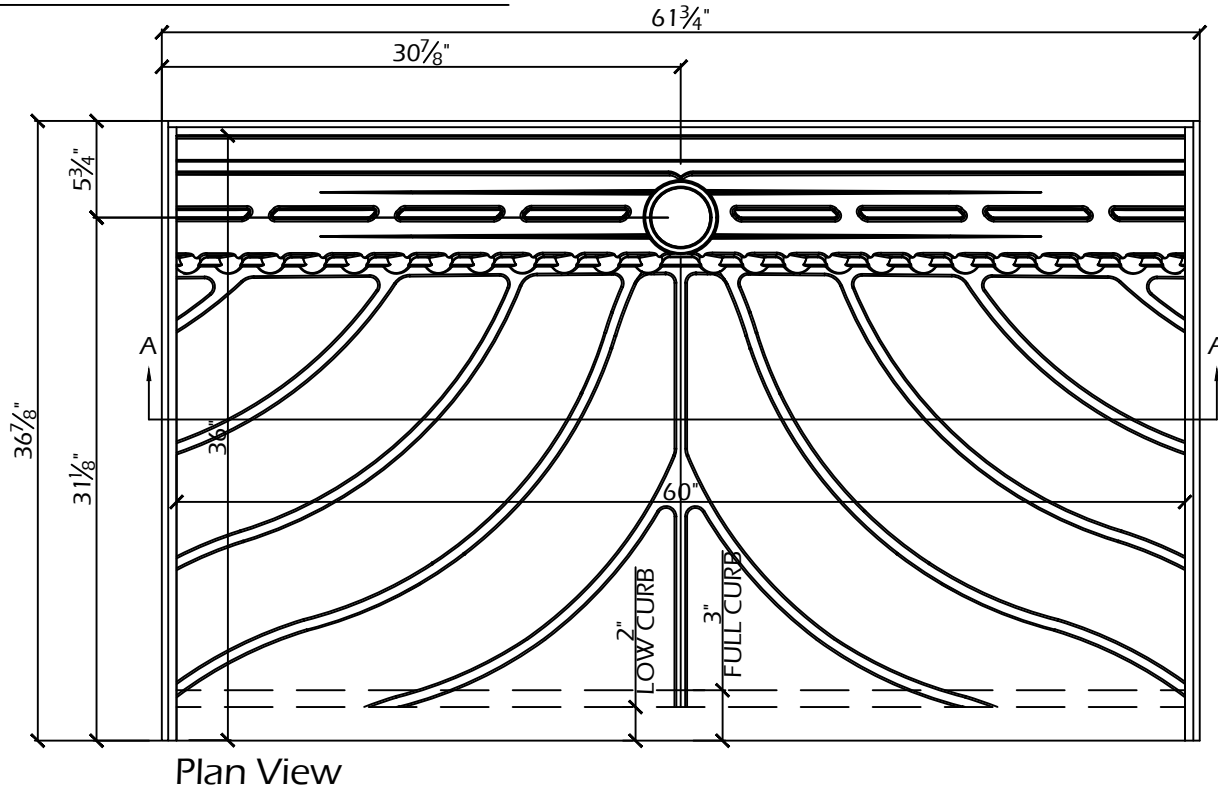
Item	Qty	Description	Part Number	Color
1	1	36x60 Rear Dual Trench Drain Shower Base	SB-3660RDTDLC-XXX-A	TBD
2	1	V36 ProFlow Drain	PF140NC	N/A
3	1	60" Trench Drain Cover & Screws	50001-60-TDC	N/A

Color Key

016	Cream	069	Natural Cream
023	Light Khaki	071	Natural Khaki
030	Bone	068	Natural Bone
037	Pearl	070	Natural Pearl
044	Platinum Gray	067	Natural Platinum
051	Ivory White	072	Natural Ivory

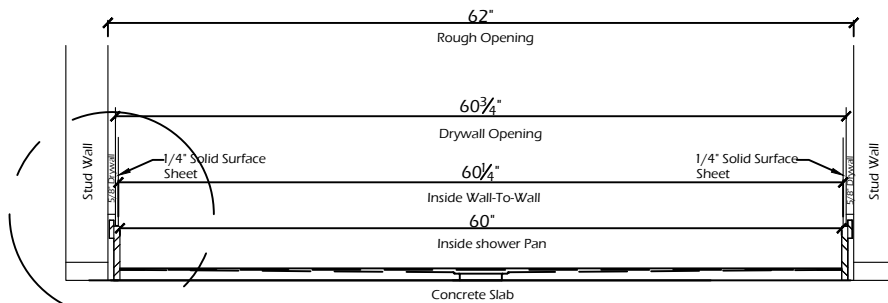
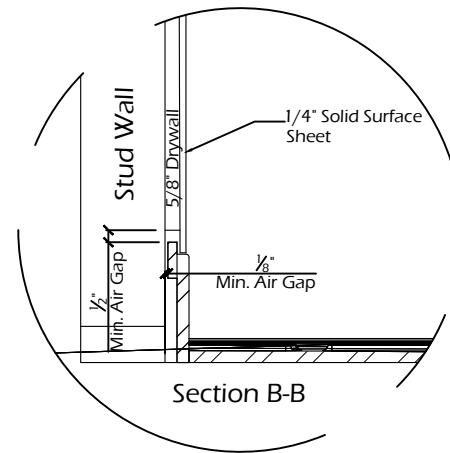
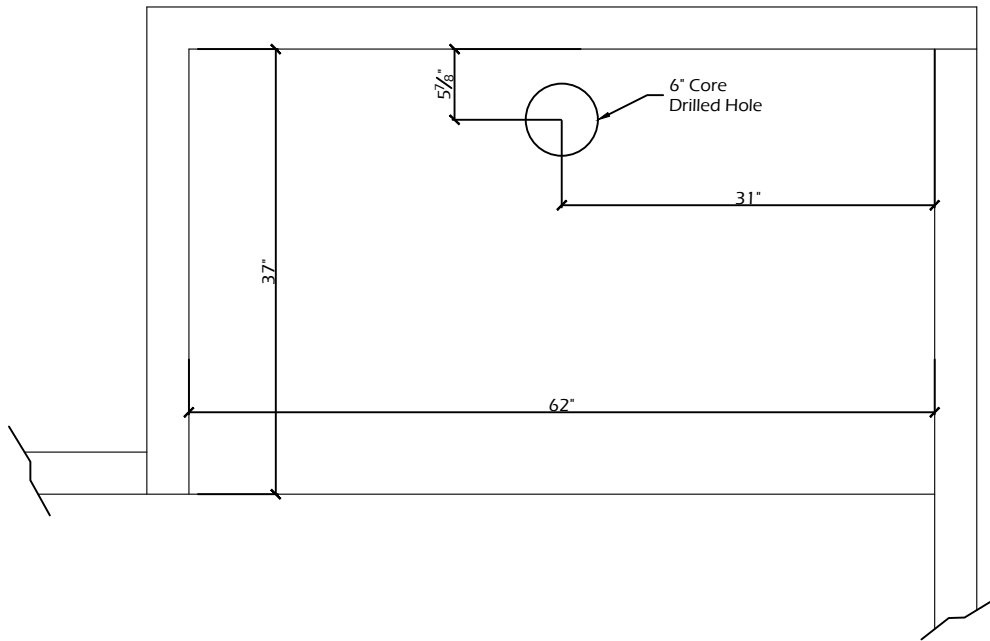
PART TOLERANCE = +/- .1/4" [0.25] UNCO. CRITICAL TOLERANCE = +/- 1/32" [0.3125]			
	Vendura Solid Surface Solutions		
	PART NAME: 36X60 Rear Dual Trench Drain-LC Shower Base	BY: SR	IR DATE: 04-12-21
	REVISION: (IR)		
SCALE: NTS	PART NUMBER: SB-3660RDTDLC-XXX-A		

SHOWER BASE:



PART TOLERANCE = +/- 1/4" (0.25) UNCO. CRITICAL TOLERANCE = +/- 1/32" (0.3125)	Vendura Solid Surface Solutions	
	PART NAME: 36X60 Rear Dual Trench Drain-LC Shower Base	BY: SR IR DATE: 04-12-21
	REVISION: (IR)	PART NUMBER: SB-3660RDTDL-XXX-A
	SCALE: NTS	

ROUGH OPENING:



Section A-A

PART TOLERANCE = +/- 1/4" (0.25) UNCO. CRITICAL TOLERANCE = +/- 1/32" (0.3125)	Vendura Solid Surface Solutions		
	PART NAME: 36X60 Rear Dual Trench Drain-LC Shower Base		
	REVISION: (IR)	BY: SR	IR DATE: 04-12-21
	SCALE: NTS	PART NUMBER: SB-3660RDTDL-XXX-A	